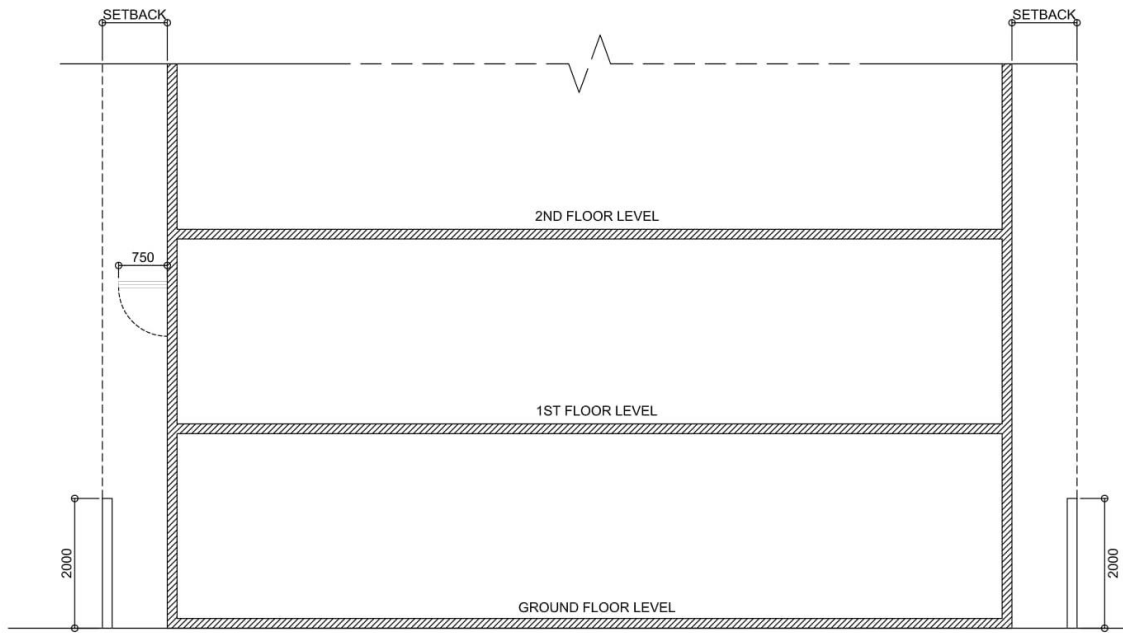


Doc ID:	UBP-2023-GLD031
Version:	1.2
Classification:	Public
Effective Date:	18th January 2024

ANNEX 6



ANNEX 7

PARKING REQUIREMENTS		
CATEGORY	MINIMUM PARKING (BASED ON UNIT/GFA)	
WAREHOUSE/STORAGE FACILITIES AND FACTORIES	HV	1 slot for (Loading/Unloading) 0-2500 SQM and 1 slot for every additional 5000 SQM
	MOTORCYCLE	1 Motorbike per every 200 SQM
GARAGES AND WORKSHOPS	MOTORCYCLE	1 Motorbike per every 100 SQM
	HV	1 slot for (Loading/Unloading) 0-2500 SQM and 1 slot for every additional 5000 SQM
Space required for 1 HV: 24m ² (4m x 6m)		
Space required for 1 motorcycle: 2m ² (1m x 2m)		
HV = HEAVY VEHICLE		
GFA = GROSS FLOOR AREA		

d-2-t